

# Why Recycle?

Recycling an item means it does not go to the landfill. Instead that item is used to make something new. This gives the item a new life!



Pennsylvania has a recycling law, Act 101, which mandates municipalities with a population of 5,000 or more people to have a recycling program for their residents.



Recycling creates jobs! 66,041 jobs here in Pennsylvania are related to the recycling and reuse industry.



## The Lackawanna County Environmental Office provides assistance with:

- Establishing recycling programs
- Waste reduction techniques
- Municipal reports and grants

### Presentations are offered on:

- Recycling
- Environmental shopping
- Waste reduction
- Water pollution
- Water conservation



## Please contact us at:

- ☎ 570-963-2017
- ✉ [shapiron@lackawannacounty.org](mailto:shapiron@lackawannacounty.org)
- 🌐 [www.lackawannacounty.org/government/departments/environmental\\_sustainability](http://www.lackawannacounty.org/government/departments/environmental_sustainability)
- 📘 Lackawanna County Environmental Office



**Lackawanna**  
*County*

Commissioners  
Bill Gaughan • Matt McGloin • Chris Chermak

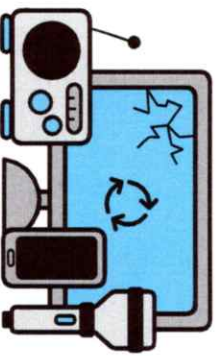
Revised January 2024

# A Guide to the

# Basics of Recycling



# ELECTRONICS RECYCLING IN PENNSYLVANIA



## COVERED DEVICE RECYCLING ACT (ACT 108)

- Covered devices such as TV's, computers, computer, monitors, and peripherals (keyboard,mouse,and other computer accessories) cannot be thrown out in Pennsylvania. They **MUST** be recycled.
- Even though you have to recycle electronics, there are few places to recycle electronics in Lackawanna County. As of today, there are no businesses that recycle TV's.
- Please contact your State Representative today and ask them to fix the issues with ACT 108!

**CHECK OUT OUR WEBSITE FOR  
MORE INFORMATION ON HARD TO  
RECYCLE ITEMS!**

# WHAT CAN NOT BE RECYCLED?



- Straws
- Food containers (ex. yogurt or butter)
- Takeout containers
- Food wrappers
- Styrofoam
- Paper or plastic dishes,cups, and utensils
- Plastic wrap
- Napkins and paper towels
- Toys
- Windows

## Helpful Tips:

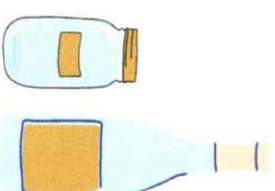
- Give bottles and jars a quick rinse before placing them in the recycling!
- Flatten boxes to increase space in your paper recycling bin
- Contact your town for specifics on their recycling program



# WHAT CAN BE RECYCLED?

## Glass

Bottles and jars **ONLY**  
Please do not place  
broken glass in the bin



## Metal Cans

Aluminum and Steel



## Paper

Newspaper, office paper,  
junk mail and magazines

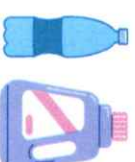


## Cardboard

Heavy shipping boxes, cereal  
boxes (inside liner removed),  
and paper towel rolls

## Plastic

**ONLY** plastic bottles, jars, and  
jugs



\*Remove caps  
before placing  
them in the bin!!\*

## Yardwaste

Leaves, brush, and grass  
Brush cut down to 4 feet or smaller  
lengths and no bigger than a  
2-inch diameter

